

PZ24-12000003  
10/02/2024



888 s andrews avenue, suite 300  
Fort Lauderdale FL 33316  
office: 954-224-0432  
LA# 6666983

DESIGNED DRAWN CHECKED

## PLANT SCHEDULE

SYMBOL	CODE	QTY	BOTANICAL NAME	COMMON NAME
<b>TREES</b>				
	AM	2	Adonia merrillii	Christmas Palm- DOUBLE
	CD	1	Coccoloba diversifolia	Pigeon Plum
	CE	12	Conocarpus erectus	Green Buttonwood
	CS2	4	Conocarpus erectus 'Sericeus'	Silver Buttonwood
	CS	7	Cordia sebestena	Orange Geiger Tree
	PM	1	Phoenix dactylifera 'Medjool'	Medjool Date Palm
	SS	13	Sabal palmetto	Cabbage Palmetto
	TR	6	Thrinax radiata	Florida Thatch Palm
<b>SHRUBS</b>				
	PB	8	Plumeria pudica 'Bridal Bouquet'	Frangipani
	SM	24	Suriana maritima	Bay Cedar
	YE	11	Yucca elephantipes	Soft Spine Yucca
<b>SHRUB AREAS</b>				
	AD	152	Alternanthera dentata	Little Ruby
	CH	80	Chrysobalanus icaco	Cocoplum
	CG	163	Clusia guttifera	Small leaf Clusia
	EH	46	Equisetum hyemale	Horsetail
	EL	351	Ernodea littoralis	Golden Creeper
	FG	46	Ficus microcarpa 'Green Island'	Green Island Ficus
	HD	349 sf	Helianthus debilis	Dune Sunflower
	HL	99	Hymenocallis latifolia	Spider Lily
	LM	32	Liriope muscari	Lilyturf
	MC	180	Muhlenbergia capillaris	Pink Muhly
	PD	212	Panicum amarum	Bitter Panicgrass
	PG	202	Portulaca grandiflora	Purslane
	US	1,426	Uniola paniculata	Sea Oats
	ZP	118	Zamia pumila	Coontie
<b>GROUND COVERS</b>				
	IP	562 sf	Ipomoea pes-caprae	Beach Morning Glory
	PV	91 sf	Paspalum vaginatum	Seashore Paspalum

SEE SHEET L-2.1 FOR COMPLETE PLANT LIST SPECIFICATION

ALL HEDGES ABUTTING CITY RIGHTS OF WAY ARE MAINTAINED AT A HEIGHT NO GREATER THAN 24

## EXISTING TREE KEY

- PALM TO REMAIN IN PLACE
- PALM TO TRANSPLANT
- TREE TO TRANSPLANT
- TREE BARRICADE
- EXISTING DUNE PLANTING TO REMAIN

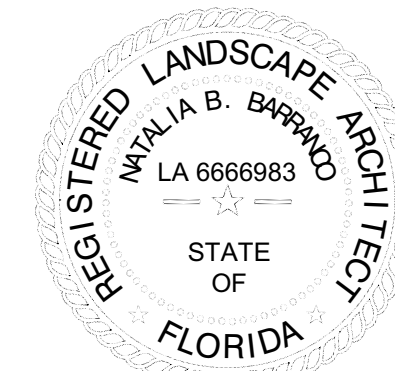
## REVISIONS

DATE: 01/12/24  
COMM: 22019

580 BRINY AVE.

Natalia Barranco  
c=US, sn=Barranco, givenName=Natalia,  
email=natalia@b-rla.com, cn=Natalia Barranco  
2024.08.19 12:29:33 -04'00'

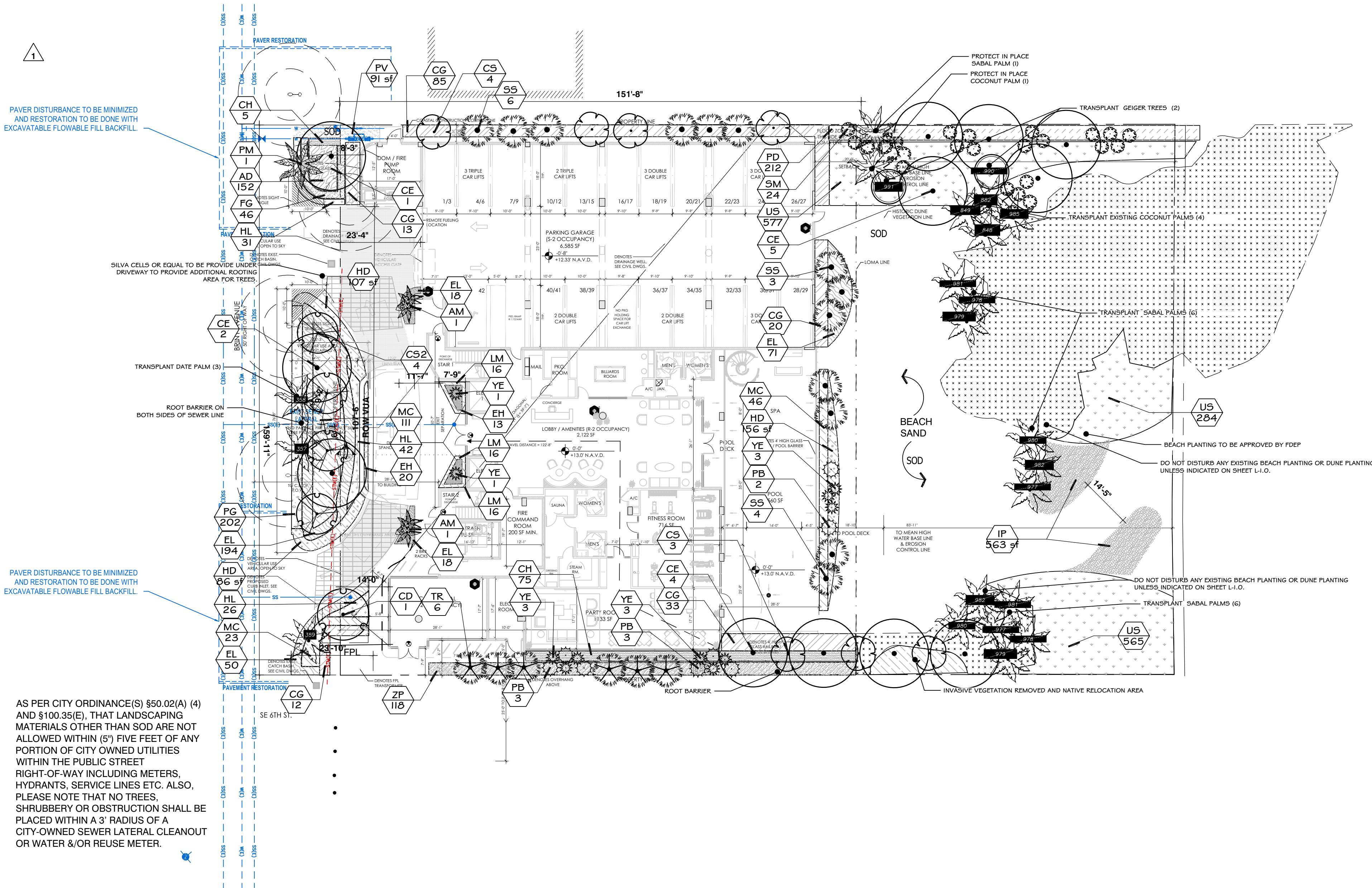
580 BRINY AVE.  
POMPAHO BEACH, FL



LANDSCAPE PLAN

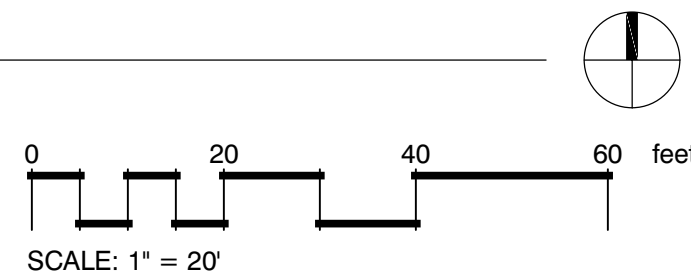
SITE PLAN APPROVAL

L-2.0



## LANDSCAPE PLAN

SCALE: 1" = 20'-0"



AS PER CITY ORDINANCE(S) §50.02(A) (4) AND §100.35(E), THAT LANDSCAPING MATERIALS OTHER THAN SOD ARE NOT ALLOWED WITHIN (5') FIVE FEET OF ANY PORTION OF CITY OWNED UTILITIES WITHIN THE PUBLIC STREET RIGHT-OF-WAY INCLUDING METERS, HYDRANTS, SERVICE LINES ETC. ALSO, PLEASE NOTE THAT NO TREES, SHRUBBERY OR OBSTRUCTION SHALL BE PLACED WITHIN A 3' RADIUS OF A CITY-OWNED SEWER LATERAL CLEANOUT OR WATER &/OR REUSE METER.